



The starting dose of 0.25 mg is a nontherapeutic dose

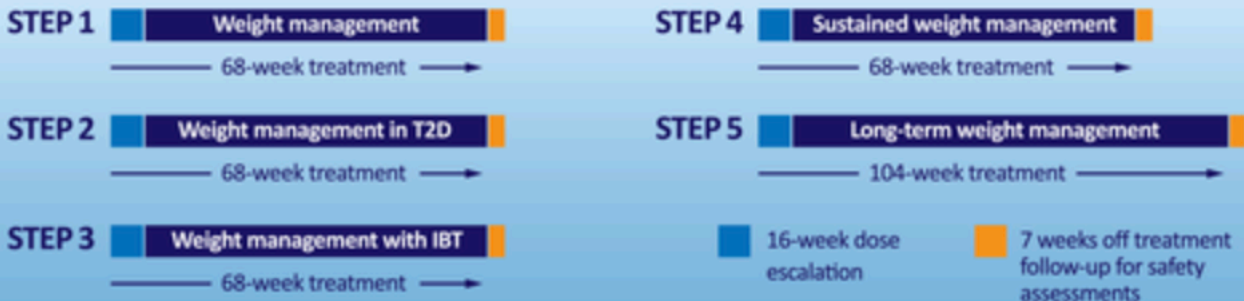
Semaglutide Treatment Effect in People with obesity (STEP)



Phase 3 trial program
Semaglutide 2.4 mg for the treatment of obesity

Primary endpoint
for all STEP trials is **weight loss**

Trial design



Change to: IBT, intensive behavioral therapy; T2D, type 2 diabetes.

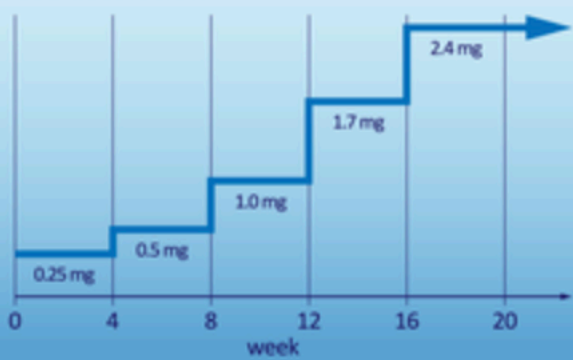
Eligibility criteria

- Unsuccessful diet history
- Age ≥ 18 years
- BMI ≥ 30 kg/m² or ≥ 27 kg/m² + weight-related complications
- STEP 2 ≥ 27 kg/m² + T2D
- No >5 kg weight change, <90 days before screening

Treatment



Dose escalation



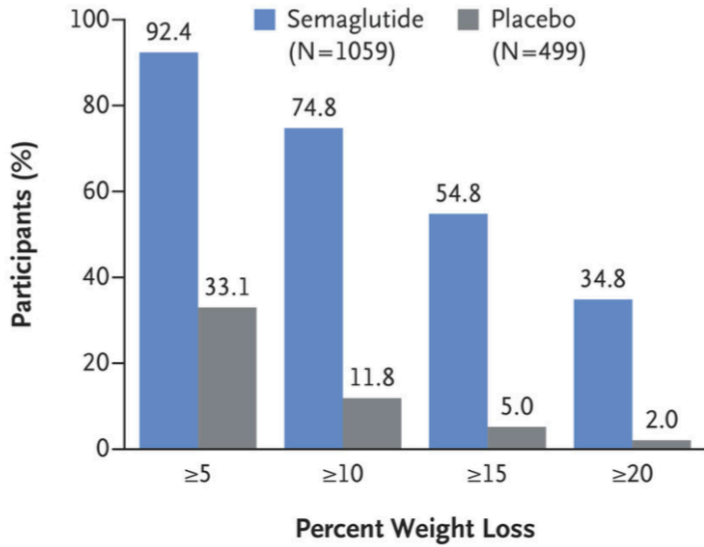
STEP 1, 2, 4, and 5: Lifestyle intervention

- 150 min/week physical activity
- 500 kcal/day diet

STEP 3: Intensive behavioral therapy

- Dietitian counseling
- Increased physical activity
- Initial 8-week low-calorie diet
- 60-week hypocaloric diet

D On-Treatment Data at Wk 68



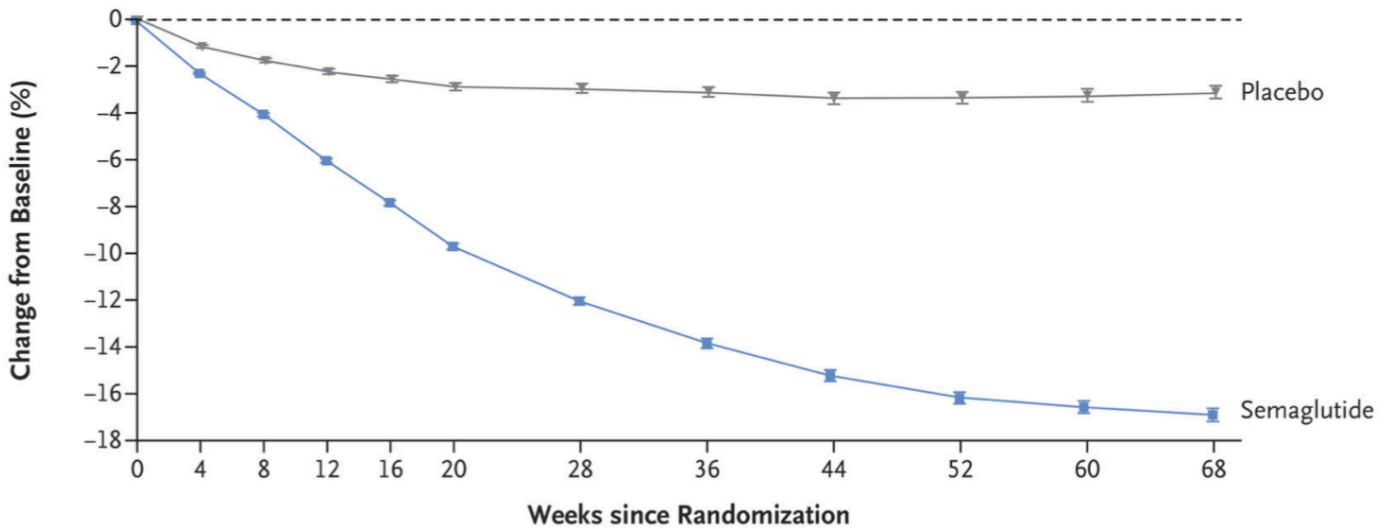
OZEMPIC® 0.5 mg + basal insulin ± metformin



OZEMPIC® 1 mg + basal insulin ± metformin



Body Weight Change from Baseline by Week, Observed On-Treatment Data



START

0.25 mg
for 4 weeks

STEP

0.5 mg
for at least 4 weeks

ESCALATE

1 mg
IF FURTHER GLYCEMIC CONTROL IS NEEDED

The starting dose of 0.25 mg is a nontherapeutic dose

體重控制治療

“體重及治療計劃”

基本資料

性別： _____

電話： _____

E-mail： _____

年齡： _____ (年)

體重： _____ Kg (公斤) 身高： _____ M(公尺)

體質讓指數(BMI) _____

體重目標： _____ Kg (公斤)

現有疾病：

糖尿病 _____

糖尿病前期(糖耐受性不良) _____

高胰島素血症 _____、

多囊性卵巢症候群 _____

現有使用藥物：

	月	W1	W2	W3	W4
體重 公斤	1				
	2				
	3				
	4				
	5				
	6				
	7				
	8				
	9				
	10				
	11				
	12				

開始使用Ozempic 注射藥物記錄表

第一期	W1	W2	W3	W4	W5	W6	W7	W8	W9	W10	W11	W12
月 / 日												
0.25mg												
0.5mg												
0.75mg												
1mg												

第二期	W1	W2	W3	W4	W5	W6	W7	W8	W9	W10	W11	W12
月 / 日												
0.25mg												
0.5mg												
0.75mg												
1mg												